

PRODUCT DATA SHEET

Product: Anti-BAP31 mAb, clone A1/182

Cat. No.: MC-066 (100 µg)

Synonyms:

BCR-associated Protein BAP31, p28 BAP31, CDM, DXS1357E, 6C6-AG Tumor-associated Antigen.

Background:

BAP31 is a major protein of the endoplasmic reticulum (ER). BAP31 is involved in anterograde transport of membrane proteins from the ER to the Golgi and probably in caspase-8-mediated apoptosis.

Specificity:

Recognizes human and monkey BAP31.

Species Reactivity:

Human and monkey. Others species not tested.

Ig Isotype:

Mouse IgG_{2a}

Immunogen:

BAP31 from Vero monkey cells.

Format:

100 µg of lyophilized monoclonal antibody purified by protein G-affinity and gel filtration (FPLC). Reconstitute with 100 µL of PBS with 0.1% sodium azide for a 1 mg/mL solution.

Storage:

Store at -20°C long term. Aliquot to avoid freeze/thaw cycles.

Applications and Suggested Dilutions:

- Western blot: Use at a 1:1,000 dilution.
- Immunoprecipitation: Use 2 µL.
- ELISA
- Flow cytometry
- Immunocytochemistry: Use at a 1:1,000 dilution.
- Immunohistochemistry: Frozen sections.

The optimal dilution for a specific application should be determined by the researcher.

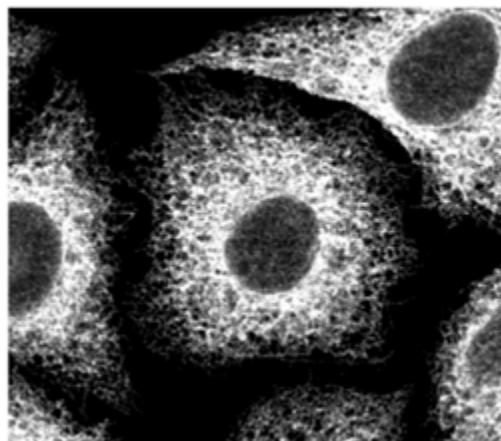


Figure: Immunocytochemistry using mAb to BAP31 (MC-066) at a 1:1,000 dilution.

Limitations:

For *in vitro* research use only. Not for use in diagnostics or in humans.

Warranty:

No warranties, expressed or implied, are made regarding the use of this product. KAMIYA BIOMEDICAL COMPANY is not liable for any damage, personal injury, or economic loss caused by this product.