

## PRODUCT DATA SHEET

**Product:** Anti-HER-2 mAb, clone e2-4001 + 3B5

**Cat. No.:** MC-089 (100 µg)

**Background:**

c-*erbB*-2 is a receptor tyrosine kinase of the c-*erbB* family. Approximately 25% of primary breast and ovarian tumors were found to overexpress the protein.

**Mol. Wt. of Antigen:**

185 kDa

**Positive Control:**

LS174T cells, or breast carcinoma.

**Species Reactivity:**

Human and rat, others not tested.

**Ig Isotype:**

Mouse IgG1 + IgG1

**Cellular Localization:**

Cell membrane

**Epitope:**

Cytoplasmic

**Immunogen:**

Cytoplasmic domain of recombinant human c-*erbB*-2/HER-2 oncoprotein (e2-4001) and a synthetic peptide from the C-terminus of human c-*erbB*-2 protein (3B5).

**Format:**

500 µL of monoclonal antibody at 200 µg/mL in 10 mM PBS, pH 7.4, with protein stabilizer and 0.09% sodium azide. Purified from ascites fluid by protein G chromatography.

**Storage:**

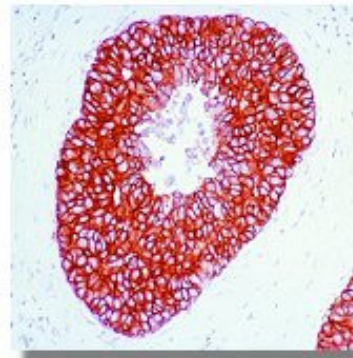
Store at 4°C.

**Applications and Suggested Dilutions:**

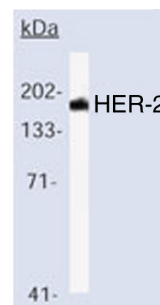
- Immunoprecipitation (cytoplasmic): Use protein G. Use 2 µg/mg protein lysate.
- Western blot: Use 0.5-1 µg/mL for 2 hours at RT.

- Immunohistochemistry: Formalin fixed, paraffin embedded - Use 0.25-0.5 µg/mL for 30 min at RT. Staining of formalin-fixed tissues requires boiling tissue sections in 10 mM citrate buffer, pH 6.0 for 10-20 min. followed by cooling at RT for 20 min.

The optimal dilution for a specific application should be determined by the researcher.



Formalin-fixed, paraffin embedded human breast carcinoma stained with MC-089 using peroxidase conjugate and DAB chromogen. Note cell membrane staining of tumor cells.



Western blot with MC-089.

**Limitations:**

For *in vitro* research use only. Not for use in diagnostics or in humans.

**Warranty:**

No warranties, expressed or implied, are made regarding the use of this product. KAMIYA BIOMEDICAL COMPANY is not liable for any damage, personal injury, or economic loss caused by this product.