

PRODUCT DATA SHEET

Product: Anti-Glutaredoxin 1 mAb, clone 28C3

Cat. No.: MC-1028 (100 µL)

Description:

Glutaredoxin (Grx) also known as thiol transferase, is a small heat-stable oxidoreductase. Grxs form part of the glutaredoxin system, comprising NADPH, GSH and glutathione reductase, which transfers electrons from NADPH to glutaredoxins via GSH. First recovered in E.coli as GSH-dependent hydrogen donors for ribonucleotide reductase, Grx catalyzes GSH-disulfide oxido-reductase via two redox-active cysteine residues. The active sequence (Cys-Pro-Tyr-Cys) is conserved in a variety of species. The 12 kDa dithiol protein has a role in reduction of mixed disulfides in cells exposed to oxidative stress.

Immunogen:

Recombinant human protein purified from E. coli

Host:

Mouse

Isotype:

IgG1

Species Reactivity:

Human. Others not tested.

Format:

HEPES with 0.15M NaCl with protein stabilizer, 0.03% sodium azide and 50% glycerol

Positive Control:

Jurkat

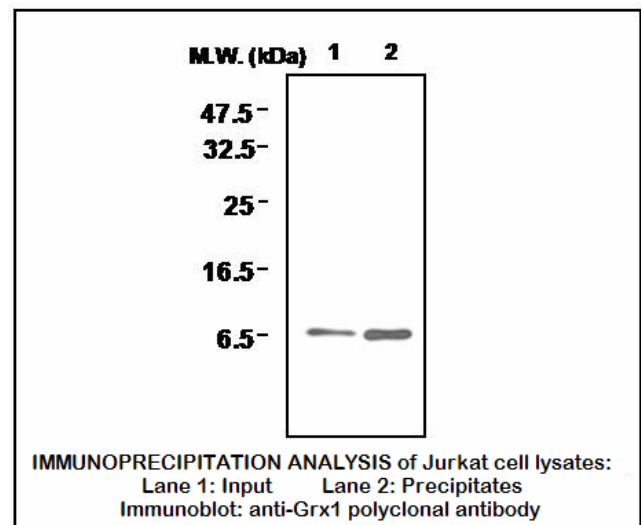
Storage:

Store at -20°C. Avoid repeated freeze/thaw cycles.

Applications:

- Immunoprecipitation: Use at 1-2 µL
- ELISA

The optimal dilution for a specific application should be determined by the researcher.



Limitations:

For *in vitro* research use only. Not for use in diagnostics or in humans.

Warranty:

No warranties, expressed or implied, are made regarding the use of this product. KAMIYA BIOMEDICAL COMPANY is not liable for any damage, personal injury, or economic loss caused by this product.