

PRODUCT DATA SHEET

Product: Anti-Granzyme B mAb, clone GrB-7

Cat. No.: MC-221 (1 mL)
MC-178 (0.5 mL)

Specificity:

Reacts specifically with the 33 kDa human serine protease granzyme B. Does not cross-react with human granzyme A.

Granzyme B is localized in cytoplasmic granules and gives a granular staining pattern. It can be used as a marker for NK-cells and activated cytotoxic T-cells (CTL), where it is involved in target cell apoptosis during lymphocyte mediated cytotoxicity. Exocytosis of granzyme containing granules in the cytoplasm of target cells leads to induction of DNA fragmentation and apoptosis of the target cell.

Cellular Localization:

Cytoplasm

Ig Isotype:

Mouse IgG_{2a}

Species Reactivity:

Human. Others not tested.

Format:

1 mL or 0.5 mL of Protein G purified antibody in PBS with protein stabilizer and 0.1% sodium azide. Concentration ~100 µg/mL.

Storage:

Store at 4°C for short term. Aliquot and store at -20°C for long term. Avoid repeated freeze/thaw cycles.

Applications and Suggested Dilutions:

The antibody stains granzyme B expressing lymphocytes. It does not react with other cell types.

■ Immunohistochemistry:

Formalin-fixed, paraffin-embedded tissue sections and sublimate formaldehyde sections.

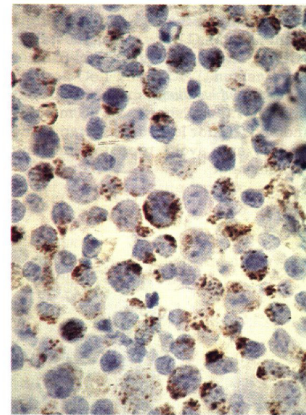
Cannot be used on frozen sections.

■ Immunocytochemistry:

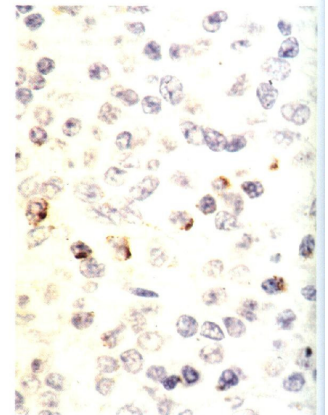
A working dilution of 1:20 is advised but optimal dilution should be tested by serial dilution.

■ Western blot

The optimal dilution for a specific application should be determined by the researcher.



Granzyme-B positive IL-2 activated Peripheral blood mononuclear (LAK) cells.



Granzyme-B positive lymphocytes in a Lymph Node.

Limitations:

For *in vitro* research use only. Not for use in diagnostics or in humans.

Warranty:

No warranties, expressed or implied, are made regarding the use of this product. KAMIYA BIOMEDICAL COMPANY is not liable for any damage, personal injury, or economic loss caused by this product.