

PRODUCT DATA SHEET

Product: Anti-MRP1 mAb, clone MRPm6

Cat. No.: MC-202 (1 mL)
MC-161 (0.5 mL)

Specificity:

Reacts with an internal epitope of Multidrug Resistance Associated Protein 1 (MRP1, ABCC1), a 180-195 kDa transmembrane transporter protein which is overexpressed in various human non-P-glycoprotein MDR tumor cell lines. Does not crossreact with human *MDR1* or *MDR3* gene products.

Ig Isotype:

Mouse IgG₁

Species Reactivity:

Human. Others not tested.

Immunogen:

Bacterial fusion protein of MRP containing a segment of 170 amino acids in the carboxy-terminal end and part of the carboxy-proximal nucleotide binding domain of the protein.

Hybridoma:

Mouse myeloma (SP2/0) x immunized mouse lymph node cells (Balb/C).

Format:

1 mL (>200 tests) or 0.5 mL (>100 tests) containing ~250 µg IgG/mL in serum-free tissue culture supernatant with protein stabilizer and 0.1% sodium azide. The antibody solution has been filtered through a 0.22 micron filter.

Culture medium: RPMI-1640, supplemented with Nutridoma-SR. The medium does not contain serum nor added enzymes.

Storage:

Store at 4°C for short term. Aliquot and store at -20°C for long term. Avoid repeated freeze/thaw cycles.

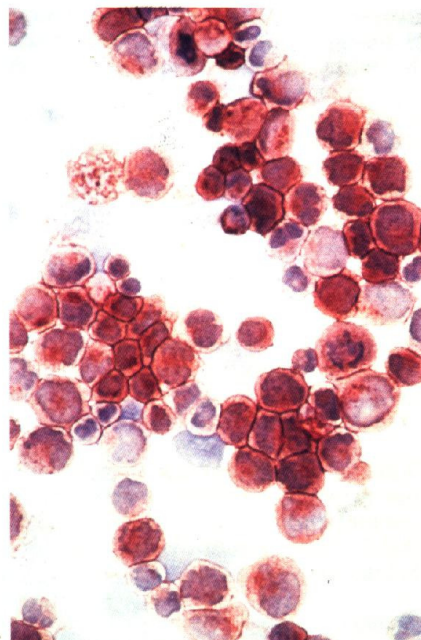
Applications and Suggested Dilutions:

- Immunocytochemistry: (Acetone fixed cell preparations) - Use at a 1:20-1:50 dilution.
- Immunohistochemistry: (Acetone fixed frozen sections) - Use at a 1:20-1:50 dilution. (Formalin-fixed, paraffin-embedded tissues)-

Use at a 1:20 dilution. For paraffin-embedded sections a 0.01 M citrate pretreatment, 10 min at 100°C, improves the performance of MRPm6.

- Flow cytometry: After fixing cells in 10% (v/v) Lysing solution, use MRPm6 at a 1:20-1:50 dilution followed by FITC-conjugated anti-mouse IgG secondary antibody.
- Western blotting: Use at a 1:20-1:50 dilution, followed by incubation with anti-mouse-HRP.

The optimal dilution for a specific application should be determined by the researcher.



MRPm6 - staining of adriamycin-selected GLC4/ADR small-cell lung carcinoma cells.

Limitations:

For *in vitro* research use only. Not for use in diagnostics or in humans.

Warranty:

No warranties, expressed or implied, are made regarding the use of this product. KAMIYA BIOMEDICAL COMPANY is not liable for any damage, personal injury, or economic loss caused by this product.