

PRODUCT DATA SHEET

Product: Anti-Ski mAb, clone G8

Cat. No.: MC-269 (100 µg)

Background:

Ski (v-ski) was discovered as a viral oncogene from the genome of avian Sloan-Kettering retrovirus. Overexpression of both v-ski and cellular homolog c-ski in avian fibroblasts leads to anchorage-independent growth and morphological transformation of chicken embryo fibroblasts.

Specificity:

Detects cellular Ski at ~95 kDa and hyperphosphorylated forms ranging to ~115 kDa.

Species Reactivity:

Human, mouse, chicken, rat and *Xenopus*. Others not tested.

Ig Isotype:

Mouse IgG₁

Immunogen:

Raised against recombinant v-Ski.

Format:

100 µg of liquid Protein G affinity-purified monoclonal antibody at 1 mg/mL in PBS containing 0.05% sodium azide.

Storage:

Store at -20°C. Aliquot to avoid freeze/thaw cycles.

Applications and Suggested Dilutions:

- Immunoprecipitation: Use at 1-4 µg/sample.
- Immunocytochemistry: Use at 1-10 µg/mL.
- Western blot: Use at 1-5 µg/mL.

The optimal dilution for a specific application should be determined by the researcher.

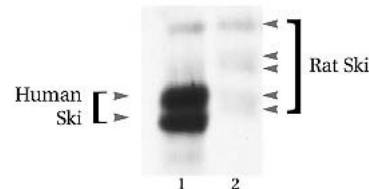


Figure 1: Western blot:

Rat cells infected with (lane 1) pBABEpuro h-Ski expressing full length human Ski proteins of ~95 kDa and 100 kDa (hyperphosphorylated) and (lane 2) infected with pBABEpuro vector showing endogenous Ski proteins ranging from ~97 kDa to 115 kDa. Blot probed with mAb to Ski (G8) at 1 µg/mL.

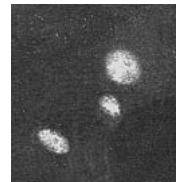


Figure 2: Immunocytochemistry: Photomicrograph illustrating retrovirally overexpressed v-Ski in fibroblasts stained with anti-Ski mAb, clone G8.

Limitations:

For *in vitro* research use only. Not for use in diagnostics or in humans.

Warranty:

No warranties, expressed or implied, are made regarding the use of this product. KAMIYA BIOMEDICAL COMPANY is not liable for any damage, personal injury, or economic loss caused by this product.