

PRODUCT DATA SHEET

Product: Anti-DNA-PKcs mAb, clone 25-4

Cat. No.: MC-362 (100 µg)

Description:

DNA-dependent Protein Kinase (DNA-PKcs) phosphorylates certain transcription factors, including Sp1, Oct-1, p53 and SV40 large T antigen *in vitro*. *In vivo*, it is involved in repairing double stranded DNA breaks.

Specificity:

Reacts with human DNA-dependent Protein Kinase.

Species Reactivity:

Human. Others species not tested.

Ig Isotype:

Mouse IgG_{2a}

Immunogen:

Human DNA-dependent Protein Kinase purified from HeLa cells.

Molecular Wt. of Antigen:

460 kDa

Epitope:

aa 3198-4127

Format:

500 µL of 200 µg/mL monoclonal antibody in 10 mM PBS, pH 7.4, with protein stabilizer and 0.09% sodium azide. Purified from ascites fluid by Protein A chromatography.

Storage:

Store at 4 °C.

Positive Control:

LS174T cells

Cellular Localization:

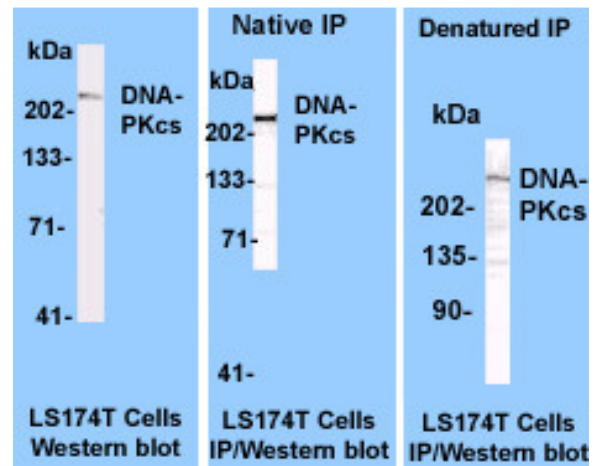
Nuclear

Applications and Suggested Dilutions:

- Gel Supershift (Not optimum)
- Immunofluorescence
- Immunoprecipitation (native or denatured)
Use Protein A, with antibody at 2 µg/mg protein lysate.
- Western blotting: Use at 2-4 µg/mL for 2 hours at room temperature.

In Western blotting, MC-362 reacts with only the intact DNA-PKcs protein and does not detect its degradation products.

The optimal dilution for a specific application should be determined by the researcher.



Limitations:

For *in vitro* research use only. Not for use in diagnostics or in humans.

Warranty:

No warranties, expressed or implied, are made regarding the use of this product. KAMIYA BIOMEDICAL COMPANY is not liable for any damage, personal injury, or economic loss caused by this product.