

PRODUCT DATA SHEET

Product: Anti-DNA-PKcs mAb, clone cocktail
(Cocktail of clones 18-2, 25-4, and 42-psc)

Cat. No.: MC-365 (100 µg)

Background:

DNA-dependent Protein Kinase (DNA-PKcs) phosphorylates certain transcription factors, including Sp1, Oct-1, p53 and SV40 large T antigen *in vitro*. *In vivo*, it is involved in repairing double strand DNA breaks

Molecular Weight of Antigen:

460 kDa

Cellular Localization:

Nuclear

Positive Control:

LS174T cells. Tonsil or testis.

Species Reactivity:

Human, mouse, hamster, *Xenopus* and chicken. Others not tested.

Ig Isotype:

Mouse IgG₁ + IgG_{2a} + IgG₁

Immunogen:

Human DNA-dependent Protein Kinase purified from HeLa cells.

Format:

500 µL of 200 µg/mL monoclonal antibody in 10 mM PBS, pH 7.4, with protein stabilizer and 0.09% sodium azide. Purified from ascites fluid by Protein A/G chromatography.

Storage:

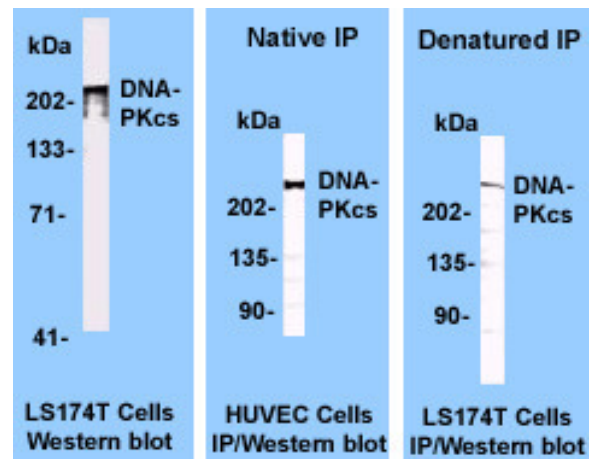
Store at 4 °C.

Applications and Suggested Dilutions:

- Immunofluorescence
- Immunoprecipitation: (native and denatured)
Use Protein G. Use a concentration of 2 µg/mg protein lysate.

- Immunohistochemistry: (Formalin/paraffin)
Use at 2-4 µg/mL for 30 minutes at RT. [Staining of formalin-fixed tissues REQUIRES boiling tissue sections in 10 mM citrate buffer, pH 6.0, for 10-20 minutes followed by cooling at RT for 20 minutes.]
- Western blot: Use at 1-2 µg/mL for 2 hrs. at RT.

The optimal dilution for a specific application should be determined by the researcher.



Limitations:

For *in vitro* research use only. Not for use in diagnostics or in humans.

Warranty:

No warranties, expressed or implied, are made regarding the use of this product. KAMIYA BIOMEDICAL COMPANY is not liable for any damage, personal injury, or economic loss caused by this product.