

PRODUCT DATA SHEET

Product: Anti-Bim_L, clone 5E5

Cat. No.: MC-505 (100 µg)

Specificity:

Recognizes Bim_L.

Species Reactivity:

Human, mouse and monkey, others not tested.

Ig Isotype:

Rat IgG2_b

Immunogen:

Recombinant mouse Bim_L fused to glutathione-S-transferase.

Format:

100 µg of Protein G purified antibody in PBS containing 0.02% sodium azide. Concentration is 1 mg/mL IgG.

Storage and Stability:

Store at 4°C short term, -20°C long term. Aliquot to avoid freeze thaw cycles.

Applications:

- Western blot
- Flow cytometry
- Immunoprecipitation
- Immunohistochemistry: Paraffin sections.
- Immunocytochemistry

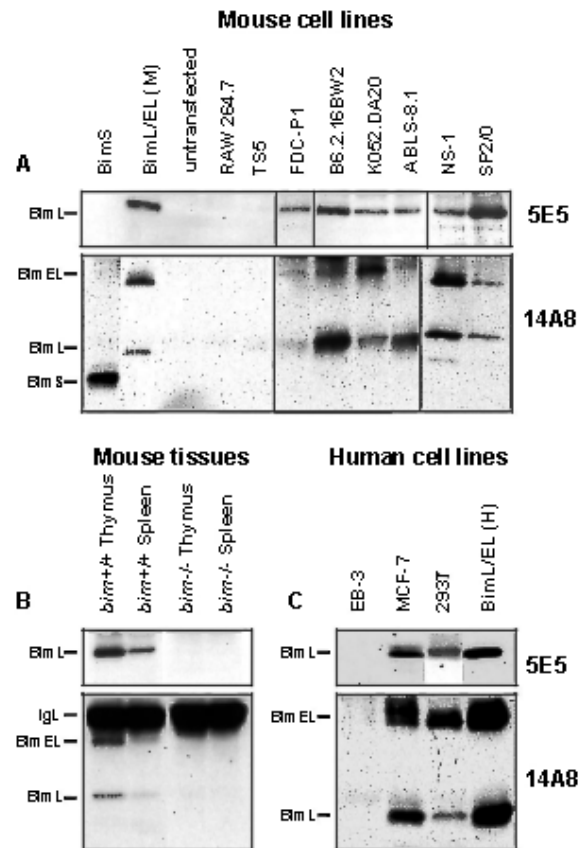
The optimal dilution for a specific application should be determined by the researcher.

Limitations:

For *in vitro* research use only. Not for use in diagnostics or in humans.

Warranty:

No warranties, expressed or implied, are made regarding the use of this product. KAMIYA BIOMEDICAL COMPANY is not liable for any damage, personal injury, or economic loss caused by this product.



Figures: IP/Western blot analysis of Bim expression in mouse (A) and human (C) cell lines. Bim proteins were immunoprecipitated from lysates of 10⁷ cells with anti-Bim_{S/EL/L}, clone 14A8 (MC-504) and anti-Bim_L (MC-505). Western blot analysis was performed with MC-504 and MC-505 followed by the addition of biotinylated mouse anti-rat IgG2b antibody and HRP-conjugated mouse anti-rat IgG2a antibody as the respective secondary antibodies, and ECL detection. (B) depicts the ability of MC-504 to immunoprecipitate Bim_L and Bim_{EL} from lysates of spleen and thymus from normal mice, but not from Bim-deficient mice.