



PRODUCT DATA SHEET

Product: Anti-Toll-like Receptor 8, clone 44C143

Cat. No: MC-518 (100 µg)

Specificity:

Recognizes human Toll-like Receptor 8 (TLR8).

Species Reactivity:

Human and mouse, others not tested.

Ig Isotype:

Mouse IgG₁

Immunogen:

KLH-conjugated synthetic peptide derived from the cytoplasmic portion of human toll-like receptor 8.

Format:

100 µg of Protein G purified antibody at 0.5 mg/mL in PBS containing 0.02% sodium azide.

Storage and Stability:

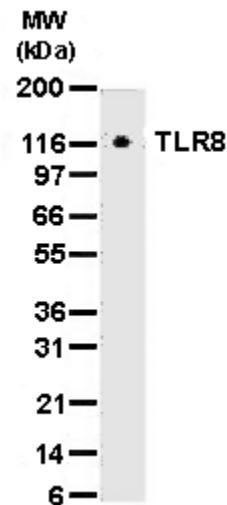
Store at 4°C short term, -20°C long term. Avoid freeze/thaw cycles.

Applications and Suggested Dilutions:

- Western blot: Use at 1-3 µg/mL
- Flow cytometry: 2-5 µg/10⁶ cells

The optimal dilution for a specific application should be determined by the researcher.

Positive Control: Whole cell lysate from human peripheral blood mononuclear cells (PBMC) can be used as positive control and a protein of approximate molecular weight of 120 kDa should be detected in Western blot. Ramos cells can be used as a positive control in flow cytometry.



Western blot analysis of TLR8 in cell lysates from 293 transfected with human TLR8 using MC-518 at 2 µg/mL.

Limitations:

For *in vitro* research use only. Not for use in diagnostics or in humans.

Warranty:

No warranties, expressed or implied, are made regarding the use of this product. KAMIYA BIOMEDICAL COMPANY is not liable for any damage, personal injury, or economic loss caused by this product.