

PRODUCT DATA SHEET

Product: Anti-Tollip mAb, clone Kimmy-1

Cat. No.: MC-520 (100 µg)

Specificity:

Recognizes human and mouse Tollip.

Species Reactivity:

Human and mouse, others not tested.

Ig Isotype:

Rat IgG2a

Immunogen:

Recombinant mouse Tollip.

Format:

100 µg of antibody in PBS containing 0.02% sodium azide. The concentration is 1 mg/mL. Purity ≥ 95% as determined by SDS-PAGE.

Storage:

Store at 4°C. Do not freeze/thaw.

Applications and Suggested Dilutions:

- Immunoprecipitation
- Western blot: Use at 5 µg/mL.

The optimal dilution for a specific application should be determined by the researcher.

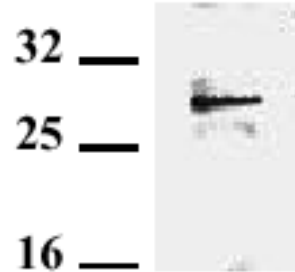


Figure: Detection of endogenous tollip in murine EL-4. Optimal dilution of Kimmy-1 is between 1-5 µg/mL. Extracts should be made from approximately $10^6 - 10^7$ cells.

Method: RIPA buffer extracts from 1.5×10^6 EL-4 cells were resolved by SDS-PAGE under reducing conditions, transferred to nitrocellulose and incubated with Kimmy-1 at a dilution of 5 µg/mL. Proteins were visualized using a peroxidase-conjugated antibody to rat IgG and a chemiluminescence detection system.

Limitations:

For *in vitro* research use only. Not for use in diagnostics or in humans.

Warranty:

No warranties, expressed or implied, are made regarding the use of this product. KAMIYA BIOMEDICAL COMPANY is not liable for any damage, personal injury, or economic loss caused by this product.