

**K-ASSAY**<sup>®</sup> *The Assay You Can Trust...*



*Introducing . . .*

# ***Metallothionein (MT) I / II ELISA Kit***

*For the simultaneous determination of metallothioneins I and II in human and animal serum, plasma, urine, cell homogenates, and cell culture supernatant.*

## **Background:**

Metallothionein (MT) is a family of cysteine-rich, low molecular weight proteins. MTs have the capacity to bind heavy metals through the thiol group of its cysteine residues. MTs play an important role in metal ion binding and in controlling biological systems. Research has linked MTs to many life science fields, and the **K-ASSAY**<sup>®</sup> **Metallothionein I / II ELISA** is a superior research tool for studies of cancer, chemotherapeutic drug resistance, oxidative stress, autism, immunology, toxicology, liver diseases, Alzheimer's disease, Parkinson's disease, Menke's disease, Pick's disease, and Wilson's Disease.

The **K-ASSAY**<sup>®</sup> **Metallothionein I / II ELISA** is specifically designed to measure native human and animal MT I and MT II. Unlike many other MT ELISA kits, the **K-ASSAY**<sup>®</sup> **Metallothionein I / II ELISA** uses antibodies against native MT, not recombinant MT. Our MT antibodies have epitopes at the MT's NH<sub>2</sub> terminal acetylated peptides. Many other MT ELISA kits only react with their recombinant MT standard, not with actual native human and animal MT. Our **K-ASSAY**<sup>®</sup> **Metallothionein I / II ELISA** is confirmed to react with native MT I and MT II in human, rabbit, mouse, rat, fish, and other animal species.

## **Features:**

- **Widest assay range of any MT ELISA kit (640 to 10,000,000 pg/mL)**
- **For human, rabbit, mouse, rat, fish, and other animal samples**
- **Reacts with native metallothioneins (<5% cross reactivity with recombinant MT)**
- **Measures metallothioneins I and II simultaneously**

*For research use only in the U.S. Not for use in diagnostic procedures in the U.S.*

**KAMIYA BIOMEDICAL COMPANY**

12779 Gateway Drive, Seattle, WA 98168

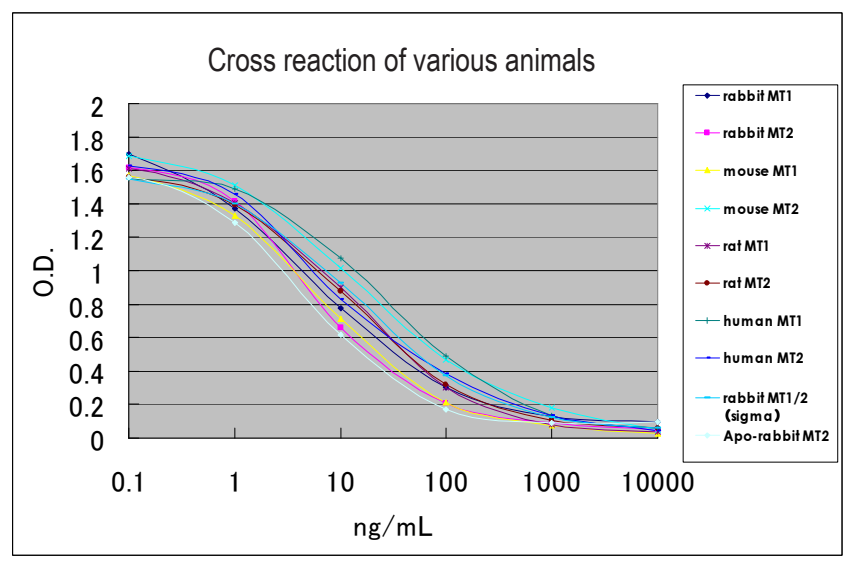
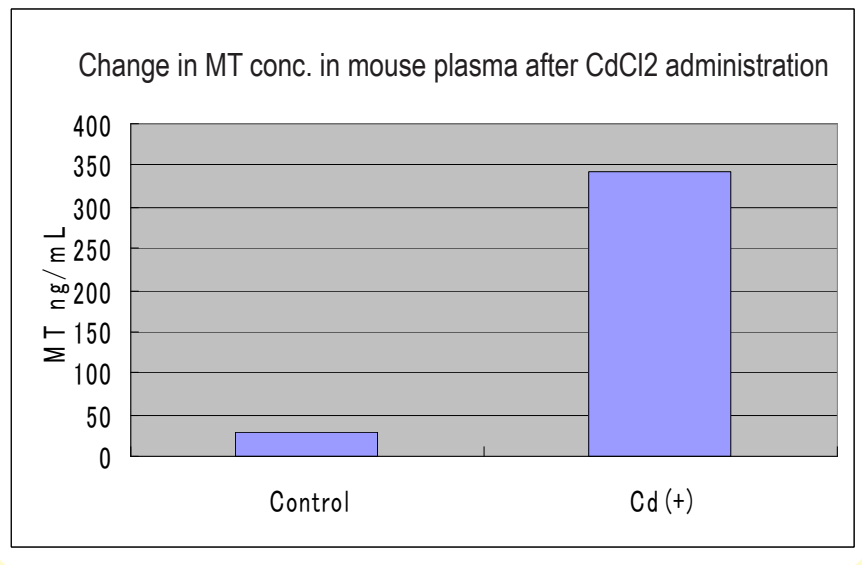
800-526-4925 • 206-575-8068 • FAX: 206-575-8094

**[www.k-assay.com](http://www.k-assay.com)**

# K-ASSAY<sup>®</sup> Metallothionein (MT) I / II ELISA Kit

## Product Overview

Assay Type	ELISA
Sample Type	Serum, plasma, urine, tissue culture supernatant, cell homogenates
Sample Volume per Test	50 $\mu$ L
Measuring Range (undiluted samples)	640 - 10,000,000 pg/mL
Number of Samples Tested per Kit	40 (96-well plate)
Total Reaction Time	2 hours, 10 minutes



**K-ASSAY.com**

Seattle, WA 98168