



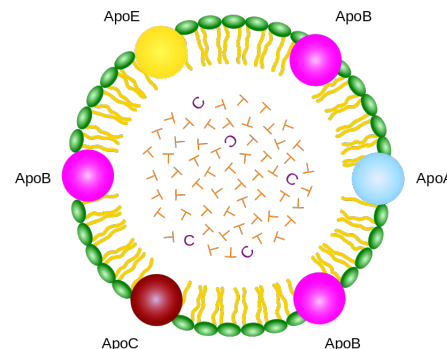
Remnant Lipoprotein Cholesterol (RLP-C) Assay Reagent for Chemistry Analyzers

Fully automated colorimetric assay for the quantitative measurement of remnant lipoprotein cholesterol in serum samples on chemistry analyzers.

Remnant lipoprotein cholesterol is an intermediate metabolite of VLDL and CM. Research studies have reported that RLP-C may be an important risk factor for coronary artery disease, myocardial infarction, and arteriosclerosis.

Features:

- **Direct detection of very low-density lipoprotein (VLDL) remnant and chylomicron (CM) remnant**
- **Specific enzymic method**
- **Liquid, ready to use reagents**
- **Assay Range: 1 - 80 mg/dL**
- **Applications available for most chemistry analyzers. Contact us for more information.**



Ordering Information:

KAI-260	RLP-C Reagent (R1: 1 x 12 mL, R2: 1 x 4 mL)
KAI-261C	RLP-C Calibrator (1 x 1 mL)
K262C-2M	RLP-C Control (2 levels: 1 x 1 mL each level)

For research use only. Not for use in diagnostic procedure in the U.S.

KAMIYA BIOMEDICAL COMPANY

12779 Gateway Drive, Seattle, WA 98168

800-526-4925 • 206-575-8068 • FAX: 206-575-8094

www.k-assay.com