

PRODUCT DATA SHEET

Product: Anti-Bim_{S/EL/L} mAb, clone 14A8

Cat. No.: MC-504 (100 µg)

Specificity:

Recognizes human, mouse and monkey Bim_L, Bim_{EL} and Bim_S.

Species Reactivity:

Human, mouse and monkey. Others not tested.

Ig Isotype:

Rat IgG_{2a}

Immunogen:

Recombinant mouse Bim_S.

Format:

Liquid, 100 µL of Protein G purified monoclonal antibody at 1 mg/mL in PBS containing 0.02% sodium azide.

Storage:

Store at 4°C short term, -20°C long term. Aliquot to avoid freeze/thaw cycles.

Applications:

- Western blot
- Flow cytometry
- Immunoprecipitation
- Immunohistochemistry: Paraffin sections
- Immunocytochemistry

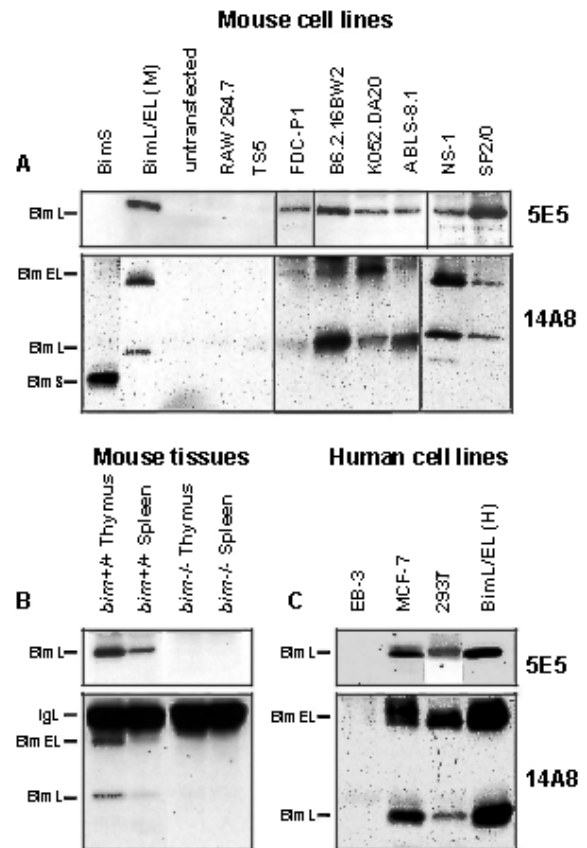
The optimal dilution for a specific application should be determined by the researcher.

Limitations:

For *in vitro* research use only. Not for use in diagnostics or in humans.

Warranty:

No warranties, expressed or implied, are made regarding the use of this product. KAMIYA BIOMEDICAL COMPANY is not liable for any damage, personal injury, or economic loss caused by this product.



Figures: IP/Western blot analysis of Bim expression in mouse (A) and human (C) cell lines. Bim proteins were immunoprecipitated from lysates of 10⁷ cells with anti-Bim_{S/EL/L}mAb, clone 14A8 (MC-504) and anti-Bim_LmAb, clone 5E5 (MC-505). Western blot analysis was performed with MC-504 and MC-505 followed by the addition of biotinylated mouse anti-rat IgG_{2b} antibody and HRP-conjugated mouse anti-rat IgG_{2a} antibody as the respective secondary antibodies, and ECL detection. (B) depicts the ability of MC-504 to immunoprecipitate Bim_L and Bim_{EL} from lysates of spleen and thymus from normal mice, but not from Bim-deficient mice.